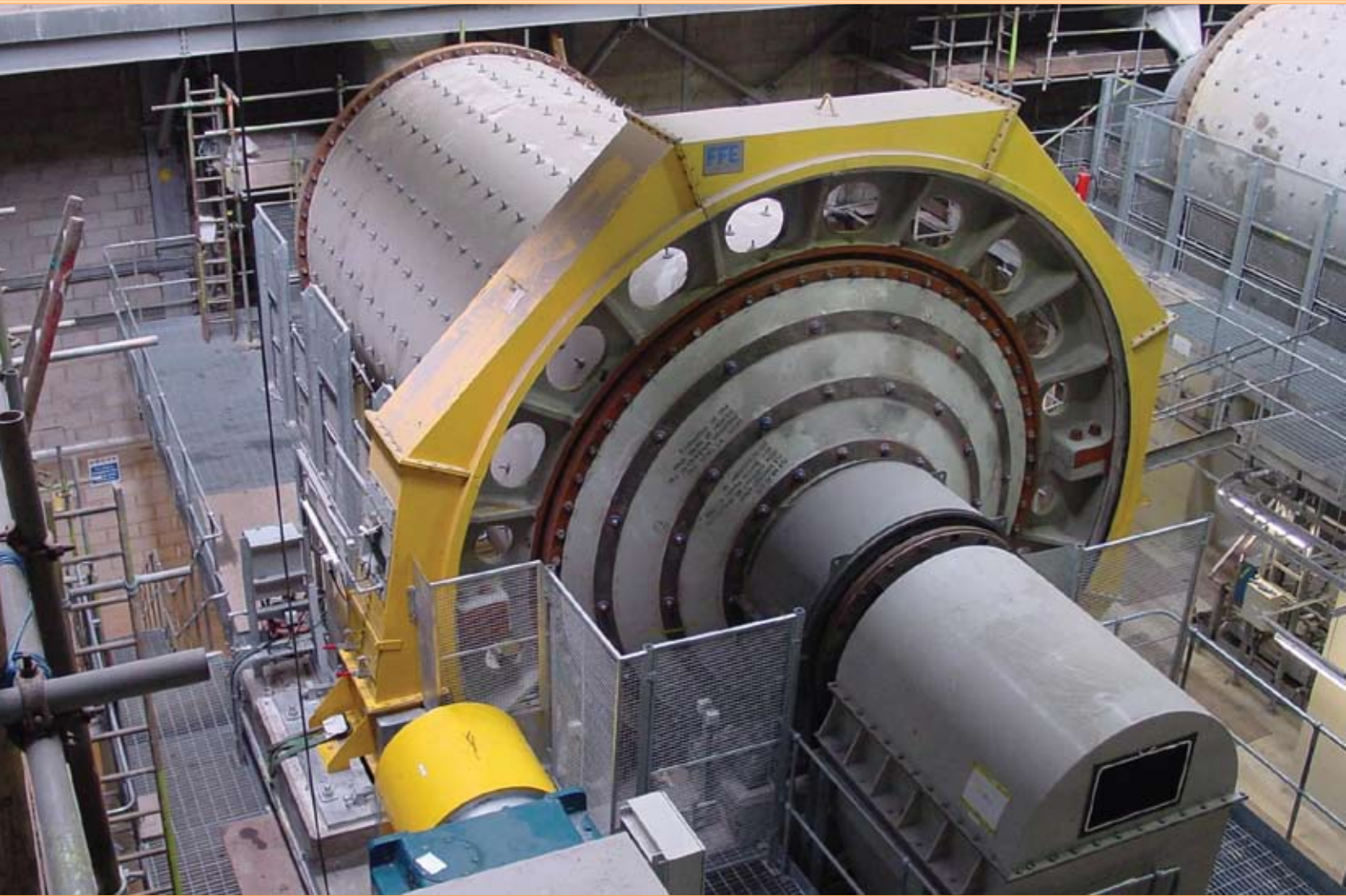


FT Series Grinding Mills



- 1.6 m — 4.3 m Diameters
- Standardized Solutions
- Robust Design



The FT Series Grinding Mills: cost efficiency with robust design

FLSmidth Minerals is known for its rugged, dependable product and system offerings. In line with this tradition, and in an effort to support today's fast track delivery schedules, FLSmidth Minerals has developed a standardized series of mills known as the FT Series Grinding Mills. The FT Series mills have been designed in standard sizes between 1.6 and 4.3 meters in diameter. These standardized designs provide quick turn-around for approval documents and improved equipment deliveries as well as increased parts availability. FT Series mills can be used as ball mills, rod mills or pebble mills, in trunnion overflow, grate, peripheral or airswept discharge, for wet and dry applications. FT Series mills are also well suited for most flue gas desulfurization (FGD) projects. Contact us, and we'll help you select the grinding mill that best suits your specific application.



Heads & Shells:

- Conical cast heads with integral trunnions for greater strength and increased mill volume
- Mill heads fully machined on inside for better liner fit-up
- Fully machined flanges with male-female fit for ease of assembly
- Fabricated shells drilled for metal or rubber liners for operational flexibility
- All welds are ultrasonically checked and shell is thermally stress relieved

Main Bearings & Lubrication:

- Main bearings with removable bronze inserts for simplified maintenance
- Large bearing access doors located on the bearing base instead of the cap
- Bearings fitted with temperature monitors for remote observation
- Hydrodynamic bearing lubrication for simplified, cost efficient lubrication
- High-pressure lift for start-up and shutdown
- External oil circulating system with heater, cooler and filters for constant conditioning of the oil

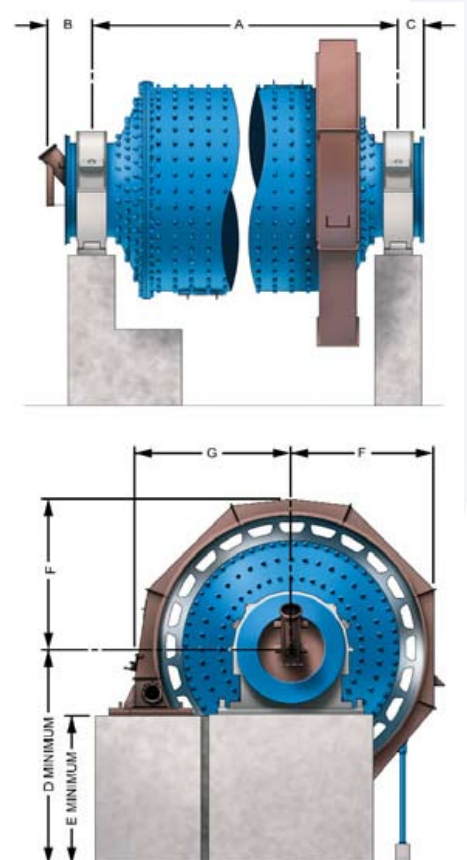
Drive Components:

- Gear and pinion designed to AGMA 6004-F88
- Gear and pinion are reversible so that both flanks of the teeth can be utilized for longer life
- Forged pinion with integral shaft for increased reliability
- Automatic gear and pinion spray lubrication system
- Fully enclosed gear guard for maximum protection
- Grease lubricated spherical roller pinion bearings for maximum life
- Pinion bearing pillow blocks with temperature monitors



Minerals Technology FT Grinding Mills

Mill Size (m/ft-in)	A	B	C	D	E	F	G	Weight (kg/lb)	Volume (m ³ /ft ³)
	(mm/ft-in)								
1.6 x 2.5 (5'-3" x 8'-2")	3686 12'-1"	500 1'-8"	340 1'-1"	2700 8'-10"	2015 6'-7"	1580 5'-2"	1840 6'-0"	35,000 77,161	4.10 144.6
1.6 x 3.5 (5'-3" x 11'-6")	4686 15'-4"	500 1'-8"	340 1'-1"	2700 8'-10"	2015 6'-7"	1580 5'-2"	1840 6'-0"	45,000 99,207	5.76 203.6
1.9 x 3.0 (6'-3" x 9'-10")	4306 14'-2"	500 1'-8"	340 1'-1"	2900 9'-6"	2215 7'-3"	1730 5'-8"	1880 6'-2"	49,100 108,246	7.36 260.0
1.9 x 4.0 (6'-3" x 13'-2")	5306 17'-5"	500 1'-8"	340 1'-1"	2900 9'-6"	2215 7'-3"	1730 5'-8"	1880 6'-2"	59,000 130,071	9.82 346.7
2.2 x 3.5 (7'-3" x 11'-6")	4813 15'-9"	535 1'-9"	384 1'-3"	3400 11'-2"	2715 8'-11"	1950 6'-5"	2220 7'-3"	70,400 155,204	12.01 424.1
2.2 x 4.5 (7'-3" x 14'-9")	5813 19'-1"	535 1'-9"	384 1'-3"	3400 11'-2"	2715 8'-11"	1950 6'-5"	2220 7'-3"	84,300 185,848	15.30 540.4
2.5 x 4.0 (8'-2" x 13'-2")	4438 14'-7"	535 1'-9"	384 1'-3"	3600 11'-10"	2715 8'-11"	2110 6'-11"	2380 7'-10"	98,500 217,153	17.88 631.4
2.5 x 4.5 (8'-2" x 14'-9")	4938 16'-2"	535 1'-9"	384 1'-3"	3600 11'-10"	2715 8'-11"	2110 6'-11"	2380 7'-10"	107,000 235,892	19.95 704.4
2.5 x 5.0 (8'-2" x 16'-5")	5438 17'-10"	535 1'-9"	384 1'-3"	3600 11'-10"	2715 8'-11"	2110 6'-11"	2380 7'-10"	115,600 254,852	22.13 781.6
2.8 x 4.5 (9'-2" x 14'-9")	6150 20'-2"	690 2'-3"	459 1'-6"	3700 12'-2"	2730 8'-11"	2260 7'-5"	2530 8'-4"	134,300 296,078	25.74 909.0
2.8 x 5.0 (9'-2" x 16'-5")	6650 21'-10"	690 2'-3"	459 1'-6"	3700 12'-2"	2730 8'-11"	2260 7'-5"	2530 8'-4"	143,100 315,478	28.53 1007.6
2.8 x 5.5 (9'-2" x 18'-0")	7150 23'-5"	690 2'-3"	459 1'-6"	3700 12'-2"	2730 8'-11"	2260 7'-5"	2530 8'-4"	152,800 336,863	31.18 1100.9
3.1 x 4.5 (10'-2" x 14'-9")	6270 20'-7"	690 2'-3"	459 1'-6"	3800 12'-6"	2830 9'-3"	2470 8'-1"	2740 9'-0"	155,700 343,256	32.33 1141.7
3.1 x 5.5 (10'-2" x 18'-0")	6770 22'-3"	690 2'-3"	459 1'-6"	3800 12'-6"	2830 9'-3"	2470 8'-1"	2740 9'-0"	178,500 393,521	39.09 1380.4
3.1 x 6.5 (10'-2" x 21'-4")	7270 23'-10"	690 2'-3"	459 1'-6"	3800 12'-6"	2830 9'-3"	2470 8'-1"	2740 9'-0"	204,400 450,620	46.01 1624.9
3.4 x 5.0 (11'-2" x 16'-5")	7006 23'-0"	755 2'-6"	534 1'-9"	3900 12'-10"	2770 9'-1"	2720 8'-11"	2980 9'-9"	212,000 467,375	43.96 1552.3
3.4 x 6.0 (11'-2" x 19'-8")	8006 26'-3"	755 2'-6"	534 1'-9"	3900 12'-10"	2770 9'-1"	2720 8'-11"	2980 9'-9"	241,400 532,190	52.19 1842.9
3.4 x 7.0 (11'-2" x 23'-0")	9006 29'-7"	755 2'-6"	534 1'-9"	3900 12'-10"	2770 9'-1"	2720 8'-11"	2980 9'-9"	271,500 598,549	60.62 2140.7
3.7 x 5.5 (12'-2" x 18'-0")	7630 25'-0"	755 2'-6"	534 1'-9"	4150 13'-6"	3020 9'-11"	3000 9'-10"	3270 10'-9"	263,000 579,810	57.80 2041.3
3.7 x 6.5 (12'-2" x 21'-4")	8630 28'-4"	755 2'-6"	534 1'-9"	4150 13'-6"	3020 9'-11"	3000 9'-10"	3270 10'-9"	300,400 662,262	67.89 2397.4
3.7 x 7.5 (12'-2" x 24'-7")	9630 31'-7"	755 2'-6"	534 1'-9"	4150 13'-6"	3020 9'-11"	3000 9'-10"	3270 10'-9"	330,500 728,620	77.73 2745.1
4.0 x 6.0 (13'-2" x 19'-8")	8168 26'-10"	1000 3'-3"	585 1'-11"	4500 14'-9"	3230 10'-7"	3350 11'-0"	3700 12'-2"	323,685 713,725	74.20 2620
4.0 x 7.0 (13'-2" x 23'-0")	9168 30'-1"	1000 3'-3"	585 1'-11"	4500 14'-9"	3230 10'-7"	3350 11'-0"	3700 12'-2"	362,015 798,240	85.80 3029
4.0 x 8.0 (13'-2" x 26'-3")	10168 33'-4"	1000 3'-3"	585 1'-11"	4500 14'-9"	3230 10'-7"	3350 11'-0"	3700 12'-2"	403,970 890,758	97.40 3440
4.3 x 6.5 (14'-2" x 21'-4")	8792 28'-10"	1000 3'-3"	585 1'-11"	4700 15'-5"	3430 11'-3"	3500 11'-6"	3900 12'-10"	384,565 847,965	93.50 3300
4.3 x 7.5 (14'-2" x 24'-7")	9792 32'-2"	1000 3'-3"	585 1'-11"	4700 15'-5"	3430 11'-3"	3500 11'-6"	3900 12'-10"	430,780 949,870	107.00 3778
4.3 x 8.5 (14'-2" x 27'-11")	10792 35'-5"	1000 3'-3"	585 1'-11"	4700 15'-5"	3430 11'-3"	3500 11'-6"	3900 12'-10"	476,948 1,051,670	120.50 4255



Whatever your needs, FLSmidth Minerals is ready to assist you ...today, tomorrow, and well into the future. For more information and assistance, contact the FLSmidth Minerals office nearest you.



FLSMIDTH
MINERALS
www.FLSmidthMinerals.com



For a complete listing of office locations, please visit:
www.flsmithminerals.com

©FLSmidth Group 2008. All rights reserved. This brochure makes no offers, representations or warranties (express or implied), and information and data contained in this brochure are for general reference only and may change at any time. Please contact FLSmidth Minerals for specific information or data that may relate to your interests